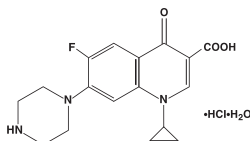


(ciprofloxacin hydrochloride ophthalmic ointment) 0.3% as Base

Sterile Ophthalmic Ointment

DESCRIPTION:

CILOXAN® (ciprofloxacin hydrochloride ophthalmic ointment) is a synthetic, sterile, multiple dose, antimicrobial for topical use. Ciprofloxacin is a fluoroquinolone antibacterial. It is available as the monohydrochloride monohydrate salt of 1-cyclopropyl-6-fluoro-1,4-dihydro-4-oxo-7-(1-piperazinyl)-3-quinolinecarboxylic acid. Ciprofloxacin is a faint to light yellow crystalline powder with a molecular weight of 385.82. Its empirical formula is $C_{17}H_{18}FN_3 \cdot HCl \cdot H_2O$ and its chemical structure is as follows:



Ciprofloxacin differs from other quinolones in that it has a fluorine atom at the 6-position, a piperazine moiety at the 7-position, and a cyclopropyl ring at the 1-position.

Each gram of CILOXAN® (ciprofloxacin hydrochloride ophthalmic ointment) contains: **Active:** ciprofloxacin HCl 3.33 mg equivalent to 3 mg base. **Inactives:** mineral oil, white petrolatum.

CLINICAL PHARMACOLOGY:

Systemic Absorption: Absorption studies in humans with the ciprofloxacin ointment have not been conducted, however, based on studies with ciprofloxacin solution, 0.3%, mean maximal concentrations are expected to be less than 2.5 ng/mL.

Microbiology: Ciprofloxacin has *in vitro* activity against a wide range of gram-negative and gram-positive organisms. The bactericidal action of ciprofloxacin results from interference with the enzyme DNA gyrase which is needed for the synthesis of bacterial DNA.

Ciprofloxacin has been shown to be active against most strains of the following microorganisms both *in vitro* and in clinical infections (SEE INDICATIONS AND USAGE section).

Aerobic gram-positive microorganisms:

Staphylococcus aureus (methicillin-susceptible strains)
Staphylococcus epidermidis (methicillin-susceptible strains)
Streptococcus pneumoniae
Streptococcus Viridans Group

Aerobic gram-negative microorganisms:

Haemophilus influenzae

The following *in vitro* data are available; **but their clinical significance in ophthalmologic infections is unknown.** The safety and effectiveness of ciprofloxacin in treating conjunctivitis due to these microorganisms have not been established in adequate and well controlled trials.

The following organisms are considered susceptible when evaluated using systemic breakpoints. However, a correlation between the *in vitro* systemic breakpoint and ophthalmological efficacy has not been established. Ciprofloxacin exhibits *in vitro* minimal inhibitory concentrations (MIC's) of 1 µg/mL or less (systemic susceptible breakpoint) against most (≥ 90%) strains of the following ocular pathogens.

Aerobic gram-positive microorganisms:

Bacillus species
Corynebacterium species
Staphylococcus haemolyticus
Staphylococcus hominis

Aerobic gram-negative microorganisms:

Acinetobacter calcoaceticus
Enterobacter aerogenes
Escherichia coli
Haemophilus parainfluenzae
Klebsiella pneumoniae
Moraxella catarrhalis
Neisseria gonorrhoeae
Proteus mirabilis
Pseudomonas aeruginosa
Serratia marcescens

Most strains of *Burkholderia cepacia* and some strains of *Stenotrophomonas maltophilia* are resistant to ciprofloxacin as are most anaerobic bacteria, including *Bacteroides fragilis* and *Clostridium difficile*.

The minimal bactericidal concentration (MBC) generally does not exceed the minimal inhibitory concentration (MIC) by more than a factor of 2. Resistance to ciprofloxacin *in vitro* usually develops slowly (multiple-step mutation).

Ciprofloxacin does not cross-react with other antimicrobial agents such as beta-lactams or aminoglycosides; therefore, organisms resistant to these drugs may be susceptible to ciprofloxacin. Organisms resistant to ciprofloxacin may be susceptible to beta-lactams or aminoglycosides.

Clinical Studies: In multicenter clinical trials, approximately 75% of the patients with signs and symptoms of bacterial conjunctivitis and positive conjunctival cultures were clinically cured and approximately 80% had presumed pathogens eradicated by the end of treatment (day 7).

INDICATIONS AND USAGE:

CILOXAN® (ciprofloxacin hydrochloride ophthalmic ointment) is indicated for the treatment of bacterial conjunctivitis caused by susceptible strains of the microorganisms listed below:

Gram-Positive:

Staphylococcus aureus
Staphylococcus epidermidis
Streptococcus pneumoniae
Streptococcus Viridans Group

Gram-Negative:

Haemophilus influenzae

CONTRAINDICATIONS:

A history of hypersensitivity to ciprofloxacin or any other component of the medication is a contraindication to its use. A history of hypersensitivity to other quinolones may also contraindicate the use of ciprofloxacin.

WARNINGS:

FOR TOPICAL OPHTHALMIC USE ONLY.

NOT FOR INJECTION INTO THE EYE.

Serious and occasionally fatal hypersensitivity (anaphylactic) reactions, some following the first dose, have been reported in patients receiving systemic quinolone therapy. Some reactions were accompanied by cardiovascular collapse, loss of consciousness, tingling, pharyngeal or facial edema, dyspnea, urticaria, and itching. Only a few patients had a history of hypersensitivity reactions. Serious anaphylactic reactions require immediate emergency treatment with epinephrine and other resuscitation measures, including oxygen, intravenous fluids, intravenous antihistamines, corticosteroids, pressor amines and airway management, as clinically indicated.

PRECAUTIONS:

General: As with other antibacterial preparations, prolonged use of ciprofloxacin may result in overgrowth of nonsusceptible organisms, including fungi. If superinfection occurs, appropriate therapy should be initiated. Whenever clinical judgment dictates, the patient should be examined with the aid of magnification, such as slit lamp biomicroscopy and, where appropriate, fluorescein staining.

Ciprofloxacin should be discontinued at the first appearance of a skin rash or any other sign of hypersensitivity reaction.

Ophthalmic ointments may retard corneal healing and cause visual blurring.

Patients should be advised not to wear contact lenses if they have signs and symptoms of bacterial conjunctivitis.

Information For Patients: Do not touch tip to any surface as this may contaminate the ointment.

Do not use the product if the imprinted carton seals have been damaged, or removed.

Drug Interactions: Specific drug interaction studies have not been conducted with ophthalmic ciprofloxacin. However, the systemic administration of some quinolones has been shown to elevate plasma concentrations of theophylline, interfere with the metabolism of caffeine, enhance the effects of the oral anticoagulant, warfarin, and its derivatives, and has been associated with transient elevations in serum creatinine in patients receiving cyclosporine concomitantly.

Carcinogenesis, Mutagenesis, Impairment of Fertility: Eight *in vitro* mutagenicity tests have been conducted with ciprofloxacin and the test results are listed below:

Salmonella/Microsome Test (Negative)

E. coli DNA Repair Assay (Negative)

Mouse Lymphoma Cell Forward Mutation Assay (Positive)

Chinese Hamster V79 Cell HGPRT Test (Negative)

Syrian Hamster Embryo Cell Transformation Assay (Negative)

Saccharomyces cerevisiae Point Mutation Assay (Negative)

Saccharomyces cerevisiae Mitotic Crossover and Gene Conversion Assay (Negative)

Rat Hepatocyte DNA Repair Assay (Positive)

Thus, two of the eight tests were positive, but the results of the following three *in vivo* test systems gave negative results:

Rat Hepatocyte DNA Repair Assay

Micronucleus Test (Mice)

Dominant Lethal Test (Mice)

Long-term carcinogenicity studies in mice and rats have been completed. After daily oral dosing for up to two years, there is no evidence that ciprofloxacin had any carcinogenic or tumorigenic effects in these species.

Pregnancy: Pregnancy Category C. Reproduction studies have been performed in rats and mice at doses up to six times the usual daily human oral dose and have revealed no evidence of impaired fertility or harm to the fetus due to ciprofloxacin. In rabbits, as with most antimicrobial agents, ciprofloxacin (30 and 100 mg/kg orally) produced gastrointestinal disturbances resulting in maternal weight loss and an increased incidence of abortion. No teratogenicity was observed at either dose. After intravenous administration, at doses up to 20 mg/kg, no maternal toxicity was produced and no embryotoxicity or teratogenicity was observed. There are no adequate and well controlled studies in pregnant women. CILOXAN® (ciprofloxacin hydrochloride ophthalmic ointment) should be used during pregnancy only if the potential benefit justifies the potential risk to the fetus.

Nursing Mothers: It is not known whether topically applied ciprofloxacin is excreted in human milk. However, it is known that orally administered ciprofloxacin is excreted in the milk of lactating rats and oral ciprofloxacin has been reported in human breast milk after a single 500 mg dose. Caution should be exercised when CILOXAN® (ciprofloxacin hydrochloride ophthalmic ointment) is administered to a nursing mother.

Pediatric Use: Safety and effectiveness of CILOXAN® (ciprofloxacin hydrochloride ophthalmic ointment) 0.3% in pediatric patients below the age of two years have not been established. Although ciprofloxacin and other quinolones may cause arthropathy in immature Beagle dogs after oral administration, topical ocular administration of ciprofloxacin to immature animals did not cause any arthropathy and there is no evidence that the ophthalmic dosage form has any effect on the weight bearing joints.

Geriatric Use: No overall clinical differences in safety or effectiveness have been observed between the elderly and other adult patients.

ADVERSE REACTIONS:

The following adverse reactions (incidences) were reported in 2% of the patients in clinical studies for CILOXAN® (ciprofloxacin hydrochloride ophthalmic ointment): discomfort, keratopathy. Other reactions associated with ciprofloxacin therapy occurring in less than 1% of patients included allergic reactions, blurred vision, corneal staining, decreased visual acuity, dry eye, edema, epitheliopathy, eye pain, foreign body sensation, hyperemia, irritation, keratoconjunctivitis, lid erythema, lid margin hyperemia, photophobia, pruritus, and tearing.

Systemic adverse reactions related to ciprofloxacin therapy occurred at an incidence below 1% and included dermatitis, nausea and taste perversion.

DOSAGE AND ADMINISTRATION:

Apply a 1/2" ribbon into the conjunctival sac three times a day on the first two days, then apply a 1/2" ribbon two times a day for the next five days.

How Supplied: 3.5 g STERILE ointment supplied in an aluminum tube with a white polyethylene tip and white polyethylene cap. 3.5 g - NDC 0065-0654-35

Storage: Store at 2° - 25°C (36° - 77° F).

ANIMAL PHARMACOLOGY:

Ciprofloxacin and related drugs have been shown to cause arthropathy in immature animals of most species tested following oral administration. However, a one month topical ocular study using immature Beagle dogs did not demonstrate any articular lesions.

Rx Only

Alcon®

Manufactured for:
ALCON LABORATORIES, INC.
Fort Worth, Texas 76134 USA

Manufactured by:
S.A. ALCON-COUVREUR N.V.
Puurs, Belgium